

reRubber
www.rerubber.com
TEL 909. 786. 2811

Ontario location
315 S. Sultana Ave.
Ontario, CA 91761

San Bernardino location
115 N. Del Rosa Dr.
San Bernardino, CA 92408

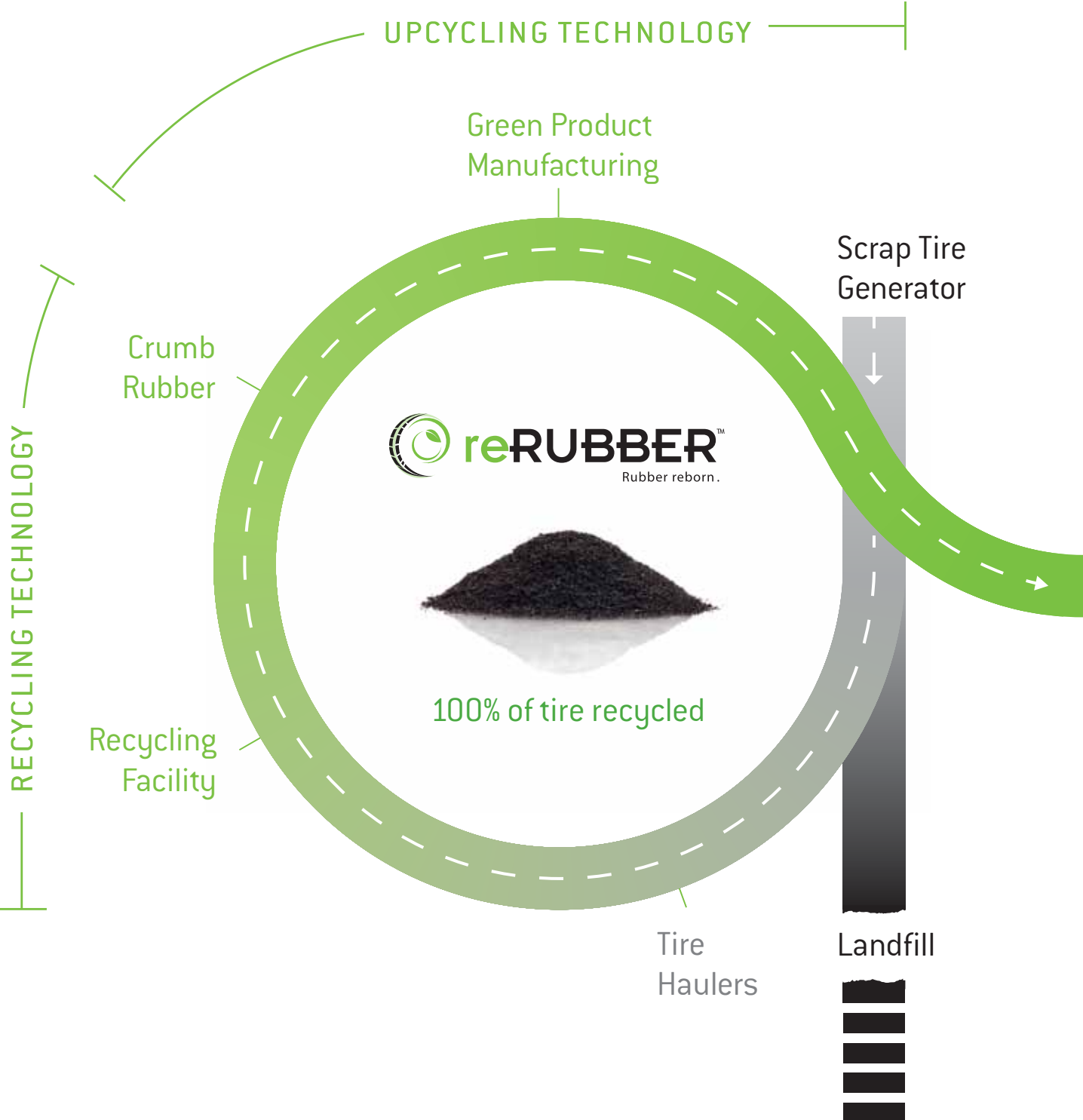
RUBBER TECHNOLOGY reINVENTED

CA Tire Recycling
Permit# TPID1544413

Funded By CalRecycle Grant



Closed loop recycler



NEW PRODUCT LIFE

- Tire Sealant
- Coatings
- Molded Products



- * 100% California scrap tires
- * 50%+ of post consumer recycled content
- * Regionally sourced materials
- * Rubber product development partner
- * 1 lb of crumb rubber saves 1 lb of CO2
- * Recycled rubber uses 1/3 of the energy vs virgin rubber
- * Eliminates demand on our limited natural resources

Rubber technology reinvented



Crumb Rubber

- Synthetic Turf
- Playground Surfacing
- Rubber Modified Asphalt
- Molded Products
- Rubber and Plastics



Tire Sealant

- Extends Tire Life
- Prevent Punctures
- Maintains Tire Pressure
- Works on All Type of Vehicles
- Water Based



Automotive Coatings

- Bedliner
- Undercoat
- Garage Floor
- Body Filler
- Bumper Repair



Infrastructural Coatings

- Waterproofing
- Crack Sealant
- Anti-Corrosion
- Energy Saving Top Coat
- Cost Effective



Molded Products

- Custom Molding Services

Crumb Rubber

Despite some misconceptions associated with scrap tires, they remain to be one of the few recycled products that perform better than conventional materials used today. There are case studies available to compare both price and performance of recycled rubber products verses other conventional products. There are exciting new developments in surfacing, flooring, roofing, traffic safety and asphalt.

A single production line at reRubber can recycle up to 1,000,000 passenger tire equivalents per year, with capability to scale easily as supply and demand increases. Therefore one line can produce 7,200 tons of rubber, 3,250 tons of nylon and 1,650 tons of steel per year.

Profile

6 mesh (3.36 mm) to 200 mesh (0.074 mm) in size at 99.99% purity from steel & nylon (in compliance with ASTM test method D-5644). This wide range of rubber particle size gives way to many different applications.

Uses

- Synthetic Turf
- Playground Surfacing
- Rubber Modified Asphalt
- Molded Products
- Rubber and Plastics
- Endless possibilities!



**RUBBER TECHNOLOGY
reINVENTED**



Benefits

- 100% Recycled Tires
- Guaranteed 99.99% Steel Free
- Non Toxic and Non Abrasive
- Saves our Natural Resources
- Proven Superior Performance
- Easy to Maintain
- Easy to clean
- Environmentally Safe
- Long Lasting



reRubber

www.rerubber.com
TEL 909. 786. 2811

Ontario location

315 S. Sultana Ave.
Ontario, CA 91761

San Bernardino location

115 N. Del Rosa Dr.
San Bernardino, CA 92408





reRubber Tire Sealant - inTire Seal

Whether you have a car, SUV or truck, InTire Seal will increase the reliability and safety of your vehicle. The formula coats the inside of your tire preventing air leakage, tire blowouts and flats caused by punctures and accidents. This also extends your tire life and increases your gas mileage by keeping tires at optimal inflation, saving you money.

How does it work?

When penetration occurs, the tire pressure forces InTire Seal into the wound area sealing instantaneously around the penetrating object. If the object self extracts then, as the tire rotates the tread area is deformed when in contact with the road surface, the puncture wound is forced open and the product is forced into the puncture wound by the air pressure within the tire.

Is it safe?

InTire Seal is completely non-toxic and non-hazardous. inTire Seal complies with all Toxic Substance Authority requirements, and its main ingredient, Propylene Glycol, is an additive found many food products.

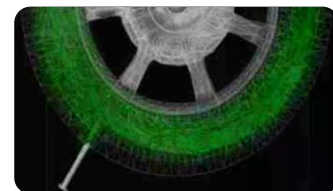
What about extreme temperatures?

InTire Seal has been extensively tested by RAPRA (Rubber and Plastics Research Association) and is certified to -45 degrees without freezing and remains stable at temperatures up to 155 degrees.

Regular vs. Industrial grade

The InTire Seal formula is designed specifically for passenger vehicles, providing enough liquidity to maintain optimal effectiveness, preventing punctures up to 1/4" (6mm) in diameter.

We also produce an Industrial-Grade formula designed specifically for industrial and commercial uses, such as construction, farm, trucking, and other large vehicles. The thicker, heavy-duty formula is for huge tires and extreme conditions as it prevents punctures up to 1/2" (12mm) in diameter.



RUBBER TECHNOLOGY reINVENTED



Benefits

- Easy to install
- Non-flammable
- Non-toxic & non-hazardous
- Will not affect TPMS in wheels
- Works on regular and industrial size vehicle tires
- Made from recycled products
- Eliminates demand on our limited natural resources
- 100% California scrap tires



Functions

- Permanently repairs punctures
- Extends tire life
- Keeps your tires cool
- Maintain tire pressure by sealing the micro-pores
- Provides optimum gas mileage
- Keep tires in balance

Easy Installation

While the Tires remain on the Car

1. The valve stem is removed from the tire.
2. The pre-calculated amount of the product is pumped into the tire.
3. The valve stem is replaced and proper tire pressure is confirmed.
4. The vehicle should be driven to spread the product about the tire.

While balancing and rotating the tires (removing the Tires from the car)

1. Once the tires have been balanced the valve stem is removed.
2. The pre-calculated amount of the product is pumped inside the tire.
3. When the valve stem is replaced, the tire pressure should be confirmed.
4. The tire can be spun on the wheel balancer to spread the product around the tire before mounting the wheel on the vehicle.

reRubber

www.rerubber.com
TEL 909. 786. 2811

Ontario location

315 S. Sultana Ave.
Ontario, CA 91761

San Bernardino location

115 N. Del Rosa Dr.
San Bernardino, CA 92408



reRubber Infrastructural Coating System

Because of its unique patented design the reRubber Infrastructural Coatings System is able to be applied easier than traditional coating systems. When cured, this coating system is as durable and flexible as any rubber membrane. It is easily applied to nearly any surface and no special equipment is required. Routine maintenance is as easy as spray washing and touching up with a paint brush.

The patented system is able to take a non-toxic, non-carcinogenic acrylic coating and infuses recycled rubber and glass to create a durable and totally waterproof rubber/glass matrix to seal and insulate the surface. It is extremely resistant to environmental damage as well as scrubbing from routine cleaning.

With the reRubber Infrastructural Coating System, you are able to seal or patch any cracks or leaks that may exist with the Caulk Crack Filler. Once cracks are sealed and the surface is dry you are now able to coat with the Primer. This process extends the life of the surface and cost significantly less than other traditional methods.

Benefits

- 100% California scrap tires
- 70%+ of post consumer recycled content
- Eliminates demand on our limited natural resources
- Costs equal or less than comparable alternatives
- Easy to apply, reduces labor cost
- Non-toxic, low VOC

Applications

- Waterproofing
- Crack Sealant
- Anti-Corrosion
- Roofing
- Bridges
- And more!



RUBBER TECHNOLOGY reINVENTED





Possible LEED points

Rubberized Coating + Cool Top Coat



Energy & Atmosphere

EA Credit 1: Optimize Energy Performance

New Construction:	1-19
Core & Shell:	3-21
Schools:	1-2
Existing Building:	1-18

Materials & Resources

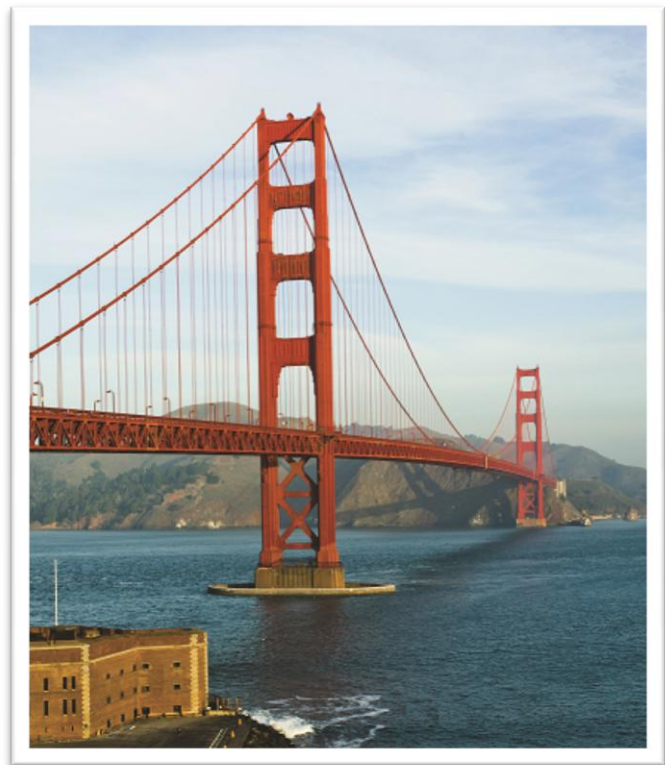
MR Credit 4: Recycled Content

New Construction:	1-2
Core & Shell:	1-2
Schools:	1-2

Sustainable Sites

SS Credit 7.2 Heart Island Effect – Roof

New Construction:	1
Core & Shell:	1
Schools:	1
Existing Building:	1



reRubber
www.rerubber.com
TEL 909. 786. 2811

Ontario location
315 S. Sultana Ave.
Ontario, CA 91761

San Bernardino location
115 N. Del Rosa Dr.
San Bernardino, CA 92408



reRubber Automotive Coating System

reRubber Automotive Coating products are made with recycled rubber particles. The rubber in our products comes from California recycled waste tires. In the U.S. alone, there are nearly one billion used tires that are stockpiled in landfills with hundreds of millions of tires being discarded annually. We are committed to waste tire diversion efforts and are continuously improving our products to include more rubber and achieve better functionality.

reRubber Automotive Body Filler

Using patented methods, reRubber has developed an all new single-component body filler that is light years ahead of any other body filler on the market. A new technology that will drastically reduce the amount of time spent on application and excess waste, saving you time and money.

Key Features

- Single-component
- Adheres to difficult substrates
- Indefinite pot-life
- Quick-cure
- Sands smooth
- Doesn't require a hardener

Specifications

- COVERAGE: Varies
- RECOAT: 5 minutes
- DFT (dry film thickness): 9-10 mils per coat
- SANDS: 25 minutes
- CURES: 25 minutes



**RUBBER TECHNOLOGY
reINVENTED**



reRubber Automotive Bedliner

reRubber Automotive Bedliner is the only truck bed liner in the world that infuses recycled rubber and glass to create an ultra durable and flexible rubber-glass matrix for optimal protection of truck beds and metal substrates. It withstands abuse, looks professional, easy to apply, resists oils and solvents and is half the price of its competitors.

The Breakthrough Technology

The formula used in developing reRubber Automotive Bedliner contains recycled rubber densely suspended in a water-based, non-toxic, non-carcinogenic, acrylic paint. The crushed rubber particles create a totally waterproof and incredibly durable surface. Typically, traditional acrylic paints have lacked the strength for rugged outdoor applications but with the inclusion of recycled rubber and glass we have been able to make a product that is highly durable, flexible, incredibly weather resistant, and easy to apply.

Key Features

- No sanding required
- Brush, roll, or spray application
- Cold weather application (down to 45° F)
- Easy to apply/ maintain
- Quick-cure
- Dent & scratch resistant
- Resists oils & solvents

Benefits

- 100% California scrap tires
- 70%+ of post consumer recycled content
- Eliminates demand on our limited natural resources
- Costs equal of less than comparable alternatives
- Easy to apply, reduce labor cost
- Non-toxic, low VOC

Specifications

- RESIN TYPE: Acrylic Water-base.
- COVERAGE: Approximately 3 gal/ per 6 ft truck bed
- DFT (dry film thickness): 7-10 mils
- CURES: 72 hours



reRubber

www.rerubber.com
TEL 909. 786. 2811

Ontario location

315 S. Sultana Ave.
Ontario, CA 91761

San Bernardino location

115 N. Del Rosa Dr.
San Bernardino, CA 92408



reRubber Molded Products

Technology

By infusing recycled crumb rubber with plastic, we will be making less non-recyclable plastic products and harvest less natural resources.

reThink

The idea is simple: **reDuce** the amount of plastic we make by replacing parts of the product with recycled crumb rubber. Scrap tires which normally go to landfills and do not decompose, are being used as raw material when making new plastic products.

reBorn

Some examples are:

Waste Receptacle / Trash Can



Jumbo Debris
Lobby Dust Pan

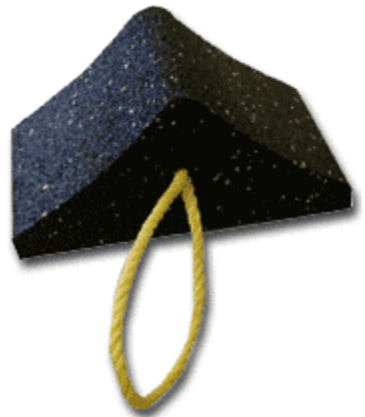
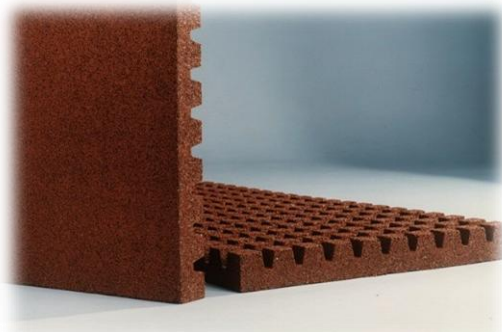
Side Press Industrial Wringer
Bucket Combo



**RUBBER TECHNOLOGY
reINVENTED**



Other Molded Products



reRubber
www.rerubber.com
TEL 909. 786. 2811

Ontario location
315 S. Sultana Ave.
Ontario, CA 91761

San Bernardino location
115 N. Del Rosa Dr.
San Bernardino, CA 92408

